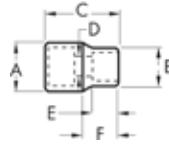


6 Pt. & 12 Pt. Standard Socket SAE/METRIC 3/8" DRIVE



Item No.	Size	Description	Drive End (inch) A	Wrench End (inch) B	Overall Length (inch) C	Bolt Clearance D	Wrench Depth (Inch) E	Length to Shoulder F	Weight (lbs)
80350	1/4"	6 Pt. Std. SAE	0.677	0.394	0.984	0.197	0.295	0.453	0.044
80351	5/16"	6 Pt. Std. SAE	0.677	0.461	0.984	0.283	0.295	0.453	0.044
80352	3/8"	6 Pt. Std. SAE	0.677	0.543	0.984	0.283	0.295	0.453	0.046
80353	7/16"	6 Pt. Std. SAE	0.677	0.630	0.984	0.354	0.295	0.453	0.046
80354	1/2"	6 Pt. Std. SAE	0.705	0.685	0.984	0.354	0.295	0.453	0.055
80355	9/16"	6 Pt. Std. SAE	0.776	0.776	0.984	0.354	0.492	0.453	0.066
80356	5/8"	6 Pt. Std. SAE	0.874	0.874	0.984	0.354	0.492	0.453	0.088
80357	11/16"	6 Pt. Std. SAE	0.941	0.941	0.984	0.354	0.492	0.453	0.106
80358	3/4"	6 Pt. Std. SAE	1.020	1.020	0.984	0.354	0.492	0.453	0.121
80359	13/16"	6 Pt. Std. SAE	1.098	1.098	1.102	0.354	0.591	0.453	0.158
80360	7/8"	6 Pt. Std. SAE	1.169	1.169	1.102	0.354	0.591	0.453	0.158
80361	15/16"	6 Pt. Std. SAE	1.256	1.256	1.161	0.354	0.591	0.453	0.158
80362	1"	6 Pt. Std. SAE	1.335	1.335	1.319	0.354	0.709	0.453	0.160
80496	1/4"	12 Pt. Std. SAE	0.677	0.394	0.984	0.197	0.295	0.453	0.044
80497	5/16"	12 Pt. Std. SAE	0.677	0.461	0.984	0.283	0.295	0.453	0.044
80498	3/8"	12 Pt. Std. SAE	0.677	0.543	0.984	0.283	0.295	0.453	0.046
80499	7/16"	12 Pt. Std. SAE	0.677	0.630	0.984	0.354	0.295	0.453	0.046
80500	1/2"	12 Pt. Std. SAE	0.705	0.685	0.984	0.354	0.295	0.453	0.055
80501	9/16"	12 Pt. Std. SAE	0.776	0.776	0.984	0.354	0.492	0.453	0.066
80502	5/8"	12 Pt. Std. SAE	0.874	0.874	0.984	0.354	0.492	0.453	0.088
80503	11/16"	12 Pt. Std. SAE	0.941	0.941	0.984	0.354	0.492	0.453	0.106
80504	3/4"	12 Pt. Std. SAE	1.020	1.020	0.984	0.354	0.492	0.453	0.121
80505	13/16"	12 Pt. Std. SAE	1.098	1.098	1.102	0.354	0.591	0.453	0.158
80506	7/8"	12 Pt. Std. SAE	1.169	1.169	1.102	0.354	0.591	0.453	0.158
80507	15/16"	12 Pt. Std. SAE	1.256	1.256	1.161	0.354	0.591	0.453	0.158
80508	1"	12 Pt. Std. SAE	1.335	1.335	1.319	0.354	0.709	0.453	0.160
80374	6 mm	6 Pt. Std. Metric	0.669	0.366	0.984	0.197	0.295	0.453	0.040
80375	7 mm	6 Pt. Std. Metric	0.669	0.425	0.984	0.197	0.295	0.453	0.040
80376	8 mm	6 Pt. Std. Metric	0.669	0.472	0.984	0.283	0.295	0.453	0.044
80377	9 mm	6 Pt. Std. Metric	0.669	0.508	0.984	0.283	0.295	0.453	0.044

3/8" OPEN STOCK

RATCHETS, SOCKETS & DRIVE TOOLS